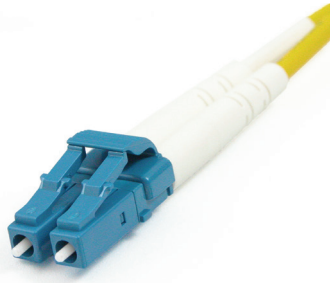
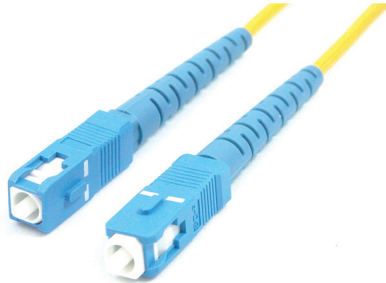


Bend Insensitive Fiber Patch Cords

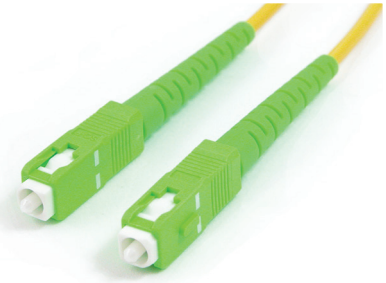
The Right Accessories Improve Your Connectivity



LC/UPC Duplex Patch Cord



SC/UPC Duplex Patch Cord



SC/APC Duplex Patch Cord

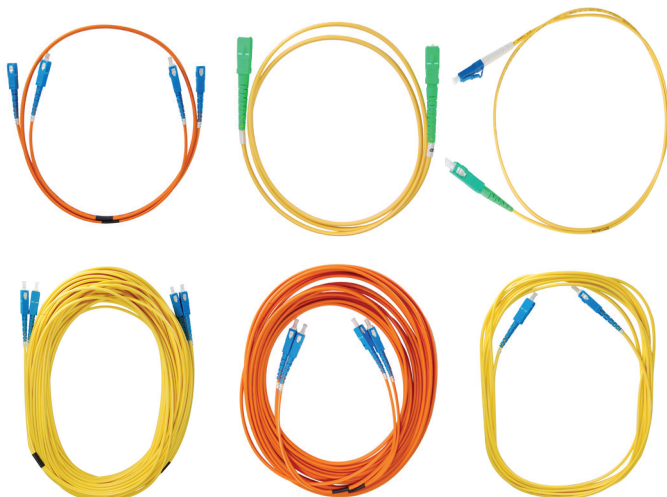
OVERVIEW

Optical fiber is sensitive to stress, particularly bending stress. When overstressed, light in the outer part of the core is no longer guided in the fiber core creating a higher loss at the stressed section of the fiber.

PCT's bend insensitive fiber patch cords (BIFPC) are constructed with Corning® LBL glass for greater performance by preventing as much bending loss as possible. The cords are available with SC and LC connectors in a variety of polishes and standard lengths of up to 30 meters.

- Comply with Bellcore GR-326-CORE specifications
- Exceed ITU-T recommendation G.657.A2/B2
- Comply with G.652.D
- Low insertion loss
- Ultra low return loss
- Operational window: 1270 to 1625 nm

* Custom lengths available



ORDERING INFORMATION

Part No. Description

xx = Length: 1, 3, 5, 10, 20, 30 Meter

Bend Insensitive Patch Cords	
LCA-LCU-DLBL30S-xx	Flexible Bendable, LBL Glass, Single Mode, Duplex, LC/APC - LC/UPC, 3 mm
LCDU-LCDU-DLBL20S-xx	Flexible Bendable, LBL Glass, Single Mode, Duplex, LC/DUP - LC/DUP, 2 mm
LCDU-SCDU-DLBL20S-xx	Flexible Bendable, LBL Glass, Single Mode, Duplex, LC/DUP - SC/UPC, 2 mm
LCU-LCU-DLBL30S-xx	Flexible Bendable, LBL Glass, Single Mode, Duplex, LC/UPC - LC/UPC, 3 mm
LCU-LCU-DOM320M-xx	Flexible Bendable, LBL Glass, Multi Mode, Duplex, OM3, LC/UPC - LC/UPC, 2 mm
LCU-MUU-DLBL30S-xx	Flexible Bendable, LBL Glass, Single Mode, Duplex, LC/UPC - MU/UPC, 3 mm
LCU-SCA-DLBL20S-xx	Flexible Bendable, LBL Glass, Single Mode, Duplex, LC/UPC - SC/APC, 2 mm
LCU-SCA-DLBL30S-xx	Flexible Bendable, LBL Glass, Single Mode, Duplex, LC/UPC - SC/APC, 3 mm
LCU-SCU-DLBL20S-xx	Flexible Bendable, LBL Glass, Single Mode, Duplex, LC/UPC - SC/UPC, 2 mm
SCA-SCA-DLBL20S-xx	Flexible Bendable, LBL Glass, Single Mode, Duplex, SC/APC - SC/APC, 2 mm
SCU-LCU-DLBL30S-xx	Flexible Bendable, LBL Glass, Single Mode, Duplex, SC/UPC - LC/UPC, 3 mm
SCU-SCU-DLBL20S-xx	Flexible Bendable, LBL Glass, Single Mode, Duplex, SC/UPC - SC/UPC, 2 mm

SPECIFICATIONS

Parameter	Unit	SM	MM
Insertion Loss	dB	<0.2	<0.25
Return Loss	dB	APC ≥ 65; UPC ≥ 55	≥ 30
Durability (1K matings)	dB	<0.2	
Operating Temperature	°C (°F)	-40 to +85 (-40 to 185)	
Cable	micron	9/125	50/125



Call +1.800.306.8948 for more information
2260 W Broadway Rd | Mesa AZ 85202-1898 | USA | pctinternational.com



Specifications subject to change.
© 2015-2016 PCT International, Inc.
Pub DS.PatchCords.BIFPC.20160115a