

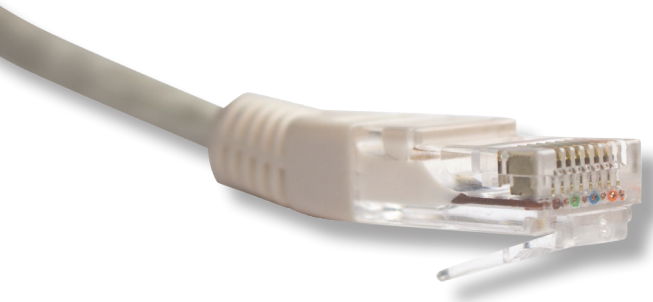
CAT5e PATCH CABLE

High Speed Networking

PCT-TCA-055



Innovation for the Last Mile™



Superior networking performance

Constructed of high quality materials and conformance to communication industry standards, PCT® Cat5e patch cable is designed and built for today's performance demanding Ethernet and gigabit networks. This Cat5e patch cable's capabilities are indispensable for hi-performance bandwidth needs and support HD video streaming and lightning-fast gameplay.

Recommended use for the following applications:

- ✓ Connecting an eMTA (combination cable modem and telephone adapter) to a desktop computer, laptop or router
- ✓ Connecting bandwidth intensive devices to a network via an Ethernet port such as:
 - Streaming video devices
 - Gaming consoles

Specifications

Parameter	Unit	PCT-TCA-055 Detail
PHYSICAL CHARACTERISTICS		
Length	ft (m)	7 (2.13)
Wire Gauge	AWG	24 (7 x 0.203 mm) stranded UTP min (ASTM B3-01 and ASTM B258-02) 1% tolerance requirements
Copper Purity	%	99
Wire Count	--	4 Pair (ATG recommended)
Connector	--	Bayonet type, 8P8C - RJ45
Jacket	--	PVC (white)
Data Speed	Mbps / BASE-T Mbps / BASE-TX	1000 / 1000 100 / 100
Compliance	--	RoHS, UL, TIA / EIA 568B

Ordering Information

PCT-TCA-055 Patch Cable, Cat5e, White, 7 ft

